

Sun River Electric Cooperative

Ripples



Office Hours: 8 a.m. to 4:30 p.m. Mon.-Fri.
Phone Numbers: 406-467-2527 or 1-800-452-7516

Website: www.sunriverelectric.coop

After Hours & Weekend Dispatch:

406-467-2526 or 1-800-452-7516

If calling from a local number or cell phone –
please use: 467-2526 or 467-2527

Be sure to check your breakers before reporting outages.

DECEMBER 2019

Scholarships Available

Sun River Electric Cooperative, Montana Electric Cooperatives' Association (MECA) and Basin Electric Power Cooperative are offering several scholarships to students who live on the Sun River Electric system.

Applications are available at www.sunriverelectric.coop, SREC or your local school. Applicants are asked to include: GPA, ACT/SAT scores, community/school involvement, work history, letters of recommendation, personal statement and a short essay on the student's goals. MECA offers one \$500 scholarship in SREC's district, and Basin Electric will offer one \$1,000 scholarship system-wide. Sun River Electric offers 18 \$1,000 scholarships, two to each school in SREC's service territory. Sun River Electric will also offer a Continuing Education scholarship for \$1,000 to

students already in college, and an Electric Lineworker scholarship for \$1,000 to those individuals interested in electric line work. The deadlines are as follows:

MECA	January 24, 2020
Basin Electric Power	January 24, 2020
Sun River Electric	April 3, 2020
SREC Continuing Education	April 3, 2020
SREC Electric Lineworker	April 3, 2020

Applications can be downloaded at www.sunriverelectric.coop.

If you have any questions, contact Ross at 467-2526 or 1800-452-7516.

Rate Changes Considered for 2020

By Scott Odegard,
CEO/General Manager

The Sun River Electric Cooperative Board has decided to continue a rate making approach started some years ago. The three-part rate (base, demand and energy) will be modified to rely more on demand and less on the base charge and energy charges. In some cases, base charges and energy charges will go down to compensate for a higher demand charge. Most customer classes will be nearly rate "neutral," but in total, the new rates will result in an increase of about 1.7 percent.

Sun River Electric buys ALL of its power through Central Montana Electric Power Cooperative (Central). Central contracts with two generation entities, those being the Western Area Power Administration (WAPA) and Basin Electric Power Cooperative, headquartered in Bismarck. The contracts Central holds with these two companies results in a power mix to Sun River Electric of about 35 percent hydropower, 34 percent coal, 17 percent wind, and 14 percent gas. The actual mix on any given day varies continually due to market fluctuations and resource availability.

Both Basin and WAPA make heavy use of the demand component when setting their wholesale rates, which means Central must as well. That makes it prudent for Sun River to include demand when setting retail rates.

Staff is fine-tuning our rate structure to reflect the Board's direction. Look for specific rates in next month's Ripples.



REBATES

Remember that SREC has appliance and water-heater rebates. Go to www.sunriverelectric.coop for details.



Pay as you go with **prePAY**
electricity from SREC.

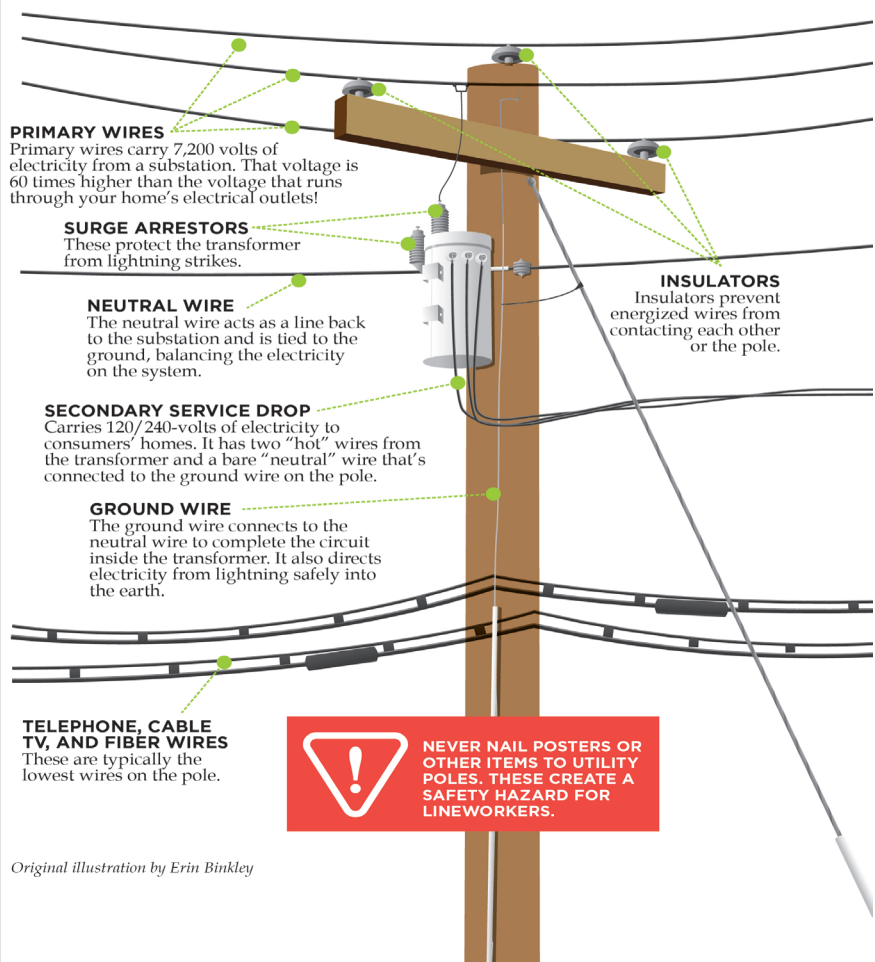
It is easy! Call SREC to get started.



monitor. pay. alert. reload.

WHAT'S ON THAT POLE?

This illustration shows the basic equipment found on electric utility poles. The equipment varies according to the location and the service they provide.



Original illustration by Erin Binkley

Hidden Numbers

If you find your account number hidden in this issue, it is worth a \$50 credit on your next statement. There is one number hidden in every issue. Give us a call if you are the lucky consumer.

**406-467-2527 or
1-800-452-7516**

**ALWAYS
CALL
BEFORE YOU
DIG**



Reminder:

Bills not paid by the 10th of the month will be charged a \$10 late fee.

Board of Trustees

Officers

John Burgmaier,
President..... 406-463-2522
Robert Pasha,
Vice President..... 406-733-2028
Roberta Rohrer,
Secretary/Treasurer..... 406-788-3960

Trustees

Russ Bloom..... 406-431-0168
Mitch Johnson..... 406-467-2109
Randy Parker..... 406-467-2974
Leonard Sivumaki..... 406-264-5482
Scott Odegard,
Manager..... 406-467-2527

Swap Column

FOR SALE: 2003 Airstream 19-foot Bambi travel trailer. The trailer is in excellent condition, well-maintained, low mileage, brakes and wheel bearings were serviced last year. Included is the load-leveling hitch, track bars and anti-sway bar. The batteries, 10 ply tires and new fridge have only two seasons on them. \$28,900.00. Russ Moorhouse 590-4597

FOR SALE: 2 horse, slant bumper-pull horse trailer, clean, great condition. Glenda Hanna, 590-5845.

FOR SALE: Small Magic Chef freezer, 22" wide, 34" long, 33" tall; New Holland manure spreader, model # 519, new floors, always shedded; Flexicoil wiring and sensors; Flexicoil 5000 seed towers. Ron Lee, 463-2596.

If you would like to place an advertisement in the *Ripples Swap Column*, please contact Sun River Electric Cooperative at 1-800-452-7516 or 467-2527, or email Kathy at kscott@sunriverelectric.coop by the first of the month. 226342

**Holiday Closures:
December 24 and
25 and January 1
in observance of
Christmas and
New Year's Day.**

